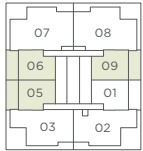


PLAN A1

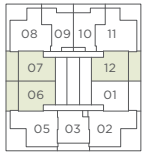
1 BEDROOM

ENCLOSED AREA	OUTDOOR SPACE	TOTAL AREA
535 SQ FT	188 SQ FT	723 SQ FT

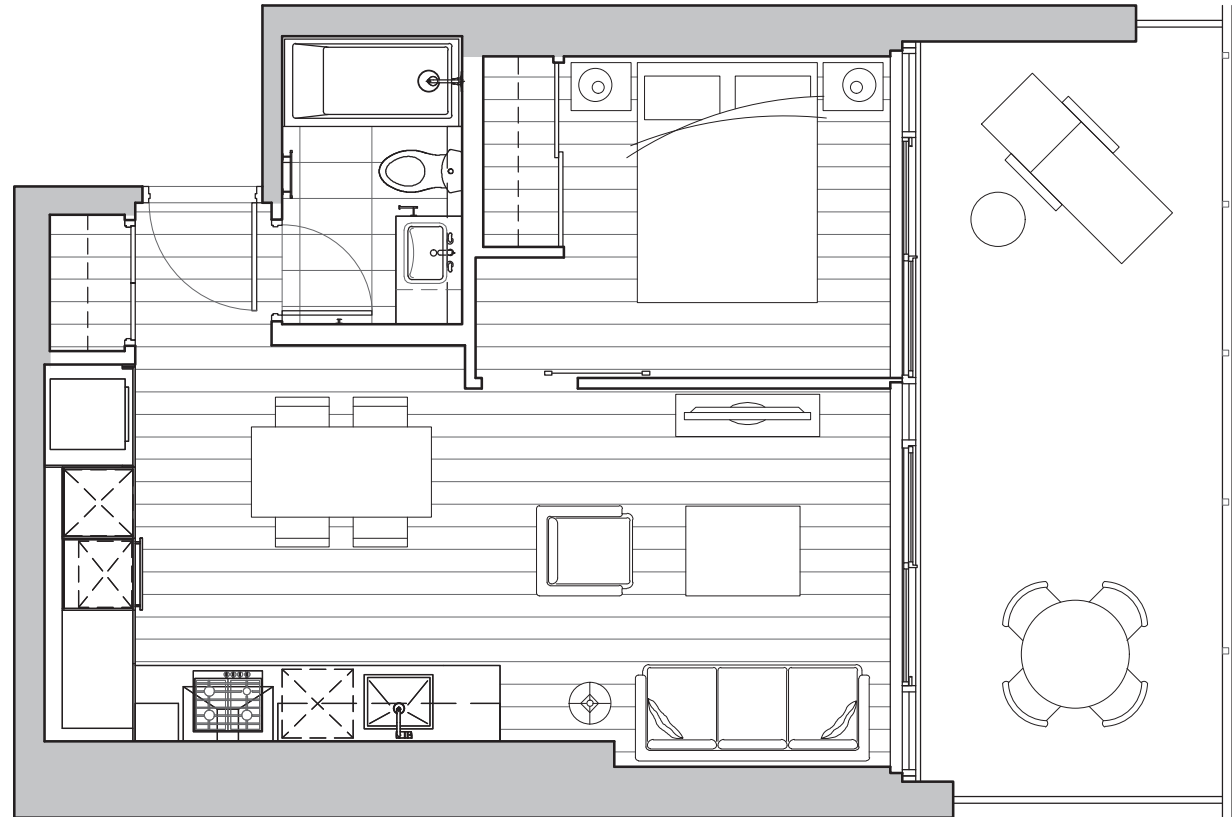
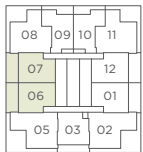
LEVELS 33-49



LEVELS 12-32



LEVELS 3-11



Actual suite plan may have minor variations from or be shown as a mirror image of the typical plan shown.

THE DEVELOPER RESERVES THE RIGHT TO MAKE MODIFICATIONS AND CHANGES TO FEATURES AND FINISHES, BRANDS, MATERIALS, BUILDING AND LANDSCAPE DESIGN, SPECIFICATIONS, CEILING HEIGHTS, NUMBER OF FLOORS, NUMBER OF UNITS, FLOORING PATTERNS AND FLOOR PLANS WITHOUT NOTIFICATION. APPROXIMATE SUITE SIZES ARE COMPUTED FROM THE OUTSIDE FACE OF EXTERIOR WALLS, THE OUTSIDE FACE OF CORRIDOR AND COMMON WALLS, AND THE CENTERLINE OF WALLS ADJACENT TO OTHER STRATA LOTS. APPROXIMATE MEASUREMENTS FOR EXTERIOR BALCONIES AND TERRACES ARE COMPUTED FROM THE OUTSIDE FACE OF EXTERIOR WALLS TO THE SLAB EDGES OF THE OUTSIDE FACE OF PARAPETS. BALCONY CONFIGURATION AND SIZE MAY VARY FLOOR TO FLOOR. ANY FLOORING PATTERN SHOWN ON THE PLAN DOES NOT INDICATE THE ACTUAL WOOD OR LAMINATE, TILE OR PAVEMENT, SHAPE, SIZE OR DIRECTION INSTALLED. THE SAME SUITE TYPE MAY VARY FROM FLOOR TO FLOOR AND/OR BE SLIGHTLY ALTERED DEPENDING ON FLOOR PLATE ORIENTATION. WINDOW AND MULLION CONFIGURATIONS MAY VARY BY FLOOR. WINDOW SYSTEMS MAY INCLUDE PANELS, WALLS OR OTHER ARCHITECTURAL FEATURES THAT MAY BLOCK VIEWS AND REDUCE WINDOW GLAZING. TERRACE AREAS MAY INCLUDE PLANTERS. IN CASES WHERE A PRIVACY GLASS SLIDING SCREEN IS OFFERED IN A ONE-BEDROOM UNIT, THE INSTALLATION MAY BE MADE AFTER THE POSSESSION DATE. THE DEVELOPER MAY INSTALL A REGULAR DOOR IN LIEU OF THE PRIVACY SCREEN AT ITS SOLE DISCRETION AND WITHOUT PRIOR NOTICE TO THE PURCHASER. ALL MATTERS WILL BE GOVERNED ENTIRELY BY THE TERMS OF THE APPLICABLE DISCLOSURE STATEMENT AND PURCHASER CONTRACT IN EACH CASE. THIS IS NOT AN OFFERING FOR SALE. ANY SUCH OFFERING MAY ONLY BE MADE WITH THE APPLICABLE DISCLOSURE STATEMENT AND AGREEMENT OF PURCHASE AND SALE. CONCORD BRENTWOOD LIMITED PARTNERSHIP E & OE.